

# SIR WILLIAM DUNN SCHOOL OF PATHOLOGY - TISSUE AND MOLECULAR PATHOLOGY SERVICE

Head of Lab: Richard Stillion  
BSc (Hons)

Email: [histology@path.ox.ac.uk](mailto:histology@path.ox.ac.uk)

Phone: 01865 275512

## Facilities

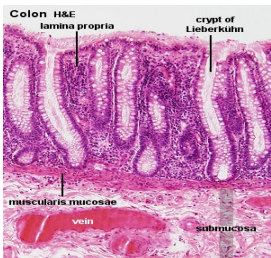
Cryostat Microtome  
Leica CM3050 S)

Embedding Station  
(Surgipath)

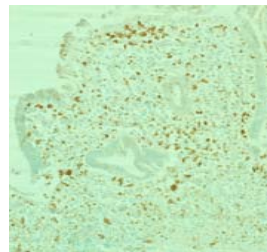
Microtome  
Leica (DSC 1)

Automated Tissue Processing  
(Thermo Scientific Excelsior)

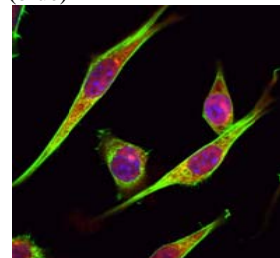
H&E Staining of Colon



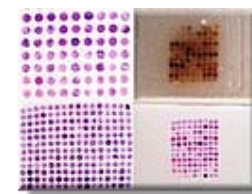
Bright Field Staining (HRP) Colon  
with colitis with CD68



Immunofluorescence Fibroblast with  
Phalloidin (green) RNF2 (red) DAPI  
(blue)



Tissue MicroArray



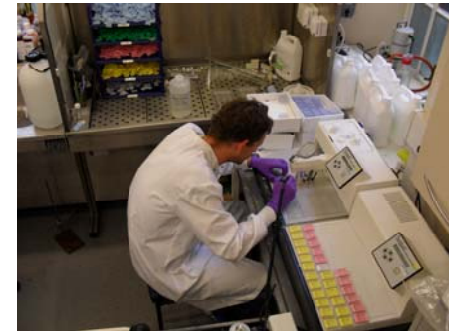
## Techniques

Histological Staining  
(eg Haematoxylin Harris and Eosin)

Immunohistochemistry  
Bright Field and Fluorescence  
(Slide Rack System)

Tissue Micro Array  
(2mm Array Mould )

Training In Histology Techniques



## Charges: Internal University Rates (negotiable)

Processing and Embedding £4 per block

Sectioning Service (Slide labelling, cutting, mounting)  
£55 per hour

Machine Rental £33 per hour

Commercial Rates on Application